

Christmas Eve, Christmas Day and New Year’s Day Services

Inside this issue:

<i>Staff Directory</i>	2
<i>Short Term Missions</i>	3-4
<i>Catasauqua News</i>	6-7
<i>Lay Ministry</i>	8
<i>Children’s Ministry</i>	9
<i>Preschool News</i>	10
<i>Bethany Women</i>	12-14
<i>Lost & Found</i>	14
<i>Seniors</i>	18-19
<i>Thank You Notes</i>	20

Christmas Eve: Saturday, December 24, 2011

Join us as we celebrate the Birth of our Lord. This year we are adding an additional service on Christmas Eve.

Wescosville Campus services will be at noon, 3:00, 5:00, 7:00, 9:00 and 11:00 p.m. The 3:00 p.m. service will be contemporary. There will be a time of fellowship held after each service. To help with ease of parking, there will be two shuttle buses running. One bus will run from 4:00 p.m. to 9:30 p.m. and the other from 4:00 p.m. to 8:30 p.m.

Catasauqua campus service will be at 7:30 p.m.

Christmas Day: Sunday, December 25, 2011

Wescosville Campus service will be at 10:00 a.m. There will be combined Sunday School classes available. One will be for ages two through five, and the other for Kindergarten through fifth grade.

Catasauqua Campus service will be at 10:30 a.m.

New Year’s Day: Sunday, January 1, 2012

Wescosville Campus will have two services: 10:00 a.m. and 4:00 p.m.

Catasauqua Campus service will be at 10:30 a.m.



Special points of Interest:

- † **Searching for the King**
pg 5
- † **Small Groups**
pg 15-17



Church Council

Rob Costantini - Chairperson Jim Brashear - Lead Pastor
 Ralph Stevenson - Associate Pastor Dan Heinmets - Exec. Director
 Christiana Gibson - Member at Large Dave Wieder - Trustee Chair
 Aimee Matthews - Member at Large Laurel Kegley - Lay Leader
 Donna Long - Secretary (non-voting) Jeff Markle - SPR Chair

Operations Team

Jim Brashear - Lead Pastor
 Dan Heinmets - Executive Director
 Donna Barnwell - Staff Representative
 Donna Long - Secretary (non-voting)

Lay Leaders, (LL)

David Hahn - class of 2011 serves on Finance and Staff-Parish Relations
 Laurel Kegley - class of 2012 serves on Nominations/Lay Leadership & Council

Lay Delegates to Annual Conference, (LD)

Wayne Benjamin Jeff Markle

Finance Committee

Dan Heinmets	Wayne Benjamin	Gene Davis	Terry Hacker
Jim Brashear	John Kegley	Rob Costantini	
Ralph Stevenson	David Hahn, LL	Sue Kleppinger	Donna Long

Bethany United Methodist Church
 1208 Brookside Road, Wescosville, PA 18106
 429 Walnut St., Catasauqua, PA 18037
 (610) 395-3613

Web: www.bethanyumchurch.com
 E-mail: info@bethanyumchurch.com

Telephone and E-mail Directory Ministry Announcements:

Worship Schedule - Ext. 41 **Senior Citizen's Fellowship** - Ext. 49

Donna Barnwell, Ext. 18
 Director of Lay Ministry
dbarnwell@bethanyumchurch.com

Darcy Bierer, Ext. 19
 Director Of Children's Ministry
dbierer@bethanyumchurch.com

Jim Brashear, Ext. 13
 Lead Pastor
jbrashear@bethanyumchurch.com

Quay Brashear, Ext. 39
 Sports Ministry Consultant
qbrashear@bethanyumchurch.com

Donna DiSciaccia, Ext. 11
 Secretary
ddisciaccia@bethanyumchurch.com

Mark Dougherty, Ext. 37
 Head Custodian
mdougherty@bethanyumchurch.com

Jennie Weitzel, Ext. 40
 Director of MMO
jweitzel@bethanyumchurch.com

Matt Gerry
 Worship Director, Catasauqua
mgerry@bethanyumchurch.com

Terry Hacker, Ext. 35
 Financial Administrator
thacker@bethanyumchurch.com

Robin Hagy, Ext. 29
 Director of Bethany
 Christian Preschool
rhagy@bethanyumchurch.com

Del Heiney, Ext. 15
 Director of Youth Ministry
dheiney@bethanyumchurch.com

Dan Heinmets, Ext. 17
 Executive Director
dheinmets@bethanyumchurch.com

Gordon Hendrickson, Ext. 47
 Short-Term Missions Consultant
gordonacts6@msn.com

Deborah Hill, Ext. 10
 Secretary
dhill@bethanyumchurch.com

Ken Hoover, Ext. 21
 Director of Music and Worship
khoover@bethanyumchurch.com

Susan Kleppinger, Ext. 20
 Secretary, Finance
skleppinger@bethanyumchurch.com

Donna Long, Ext. 27
 Office Manager
dlong@bethanyumchurch.com

Judy Rotkowski, Ext. 12
 Secretary
jrotkowski@bethanyumchurch.com

Steve Skekel, Ext. 38
 Director of Technical Arts
sskekel@bethanyumchurch.com

Ralph Stevenson, Ext. 14
 Associate Pastor
rstevenson@bethanyumchurch.com

Kathryn Wieder, Ext. 16
 Pastor of Congregational Care
kwieder@bethanyumchurch.com

Music Ministry Staff:
David Kleppinger, Organist
Amanda Furbeck, Pianist

Staff - Parish Relations

Class of 2011

David Hahn, LL
 Eric Stinson

Class of 2012

Dan Heinmets, Executive Director
 Jeff Markle, Chair
 Barb Fackler

Class of 2013

Lori Buss

Trustees

Class of 2011

Gene Davis Robert Huber
 Karen Schrantz

Class of 2012

David Wieder, Chair
 Jason Smith Ron Carrington
 Marlene Dorman

Class of 2013

Mike Iacocca
 David Dudley

Lay Leadership (Nominations)

Class of 2011

Susan Farkas
 Bob Ingalls

Class of 2012

Laurel Kegley
 Ed Miller

Class of 2013

Mary Powell

Staff - Pastor Jim, Pastor Ralph, Donna Barnwell

If you have ideas, vision, etc. for Bethany UMC, contact any of the Council Members or the Operations Team Members. You can also communicate any feedback and/or questions to these teams via the FamilyForum@bethanyumchurch.com



Short-Term Missions

Contact Rev. Gordon Hendrickson, our Short Term Mission Consultant at (267) 258-9507

First Africa Ministry Celebration was held on November 5th at Hempfield UMC. More about this event will be shared in an upcoming Missions B Mail.

Early Response Teams Training was held on Nov. 19th at Bethany Church:



Read more: <http://www.epaumc.org/resources/disasterresponse/early-response>

ERT Training November 19, 2011—this was held at our church to allow more of you to do short term missions. Early Response Teams (ERTs) are the folks who go in right after the emergency phase of a disaster to muck out homes, tarp roofs, remove wet drywall and insulation and cut up downed trees to make homes safe, sanitary and secure. No repairs are performed by these teams. They often need to be totally self-sufficient, taking care of their own meals and transportation into and out of the affected area. Training is mandatory in order to participate on one of these teams and reasonably good health is required. Our goal is to eventually be able to deploy ERTs from each of the six districts in our conference, each with their own, fully equipped trailer.

The mission of an Early Response Team is to provide a caring Christian presence in the aftermath of a disaster. These teams are neither first response groups of emergency workers nor recovery rebuild or repair teams; rather they fill a specific need in the early days after a disaster to establish the presence of the church.

"Acts of Kindness" - a new mission's ministry to people in our local communities

You can reach out in the name of Jesus to people in our communities who have specific needs. You will be hearing more of this mission outreach into our neighborhoods and at work. You can make a difference!

Jamaica Christian School for the Deaf Mission Trip

February 7-11, 2012 - cost +/- \$1,000.00. So far there are six people going. If you are interested, please contact Jay and or Sandy: skijay0520@yahoo.com.

Gordon took some videos which can be seen on Youtube:

http://www.youtube.com/watch?v=70qCPyVblHU&feature=mfu_in_order&list=UL

http://www.youtube.com/watch?v=hgm-1qn6f3E&feature=mfu_in_order&list=UL

http://www.youtube.com/watch?v=cbU51w0SZHs&feature=BFa&list=ULPR_FetX-yjw&index=10

Short Term Mission Bible Study:

We have scheduled meetings for November 28 in the parsonage at 7:00 p.m. and December 21. For the November meeting, we will do our Bible study and have some missionaries visit with us. Please come if you want to learn more about short term mission opportunities.



Saving God's Children:

Traci Llado is looking for more sponsors in Africa and Costa Rica. Here is a recent incident with one of the students in Jamaica. Marci sent us the following email request for medical assistance:

Good morning Traci,

One of our students, Shawna-Kay, need some assistance in visiting the doctor. I was wondering if her supporters or the church could help

We do not have any funds and she needs to see the doctor tomorrow, she may even need to have an MRI scan done. She has been having fainting spells and hormonal problems.

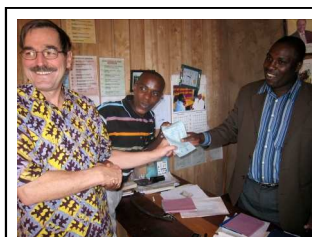
We replied the next day that we could indeed help, with funds from the Lisa Markle memorial fund, which was designated for helping the JCSFD students with their medical needs.

Kenya Update

Trip March 8-19, 2012 Cost \$3,200.00 Scholarships available, talk with Gordon. The trip will include teaching local Pastors, hosting medical clinics, educating children, and possibly completing construction projects.

This will also be a special time of celebration as our first group of Pastors will have completed their four year course of study and will be certified as Ministers of the Gospel. These rural Pastors would never have had the means to attend seminary. The education they have received is the same as our certified local Pastors in the Eastern Pennsylvania Conference of the United Methodist Church.

This is a great accomplishment for this first group of rural Pastors and a great gift towards the forward growth of the Church in Kenya. Two other classes are currently meeting and a third class may be organized for 2012. Through this education ministry we are touching thousands of lives, as each one of these rural Pastors works for Jesus Christ.



Gordon, James Mwita, and the Chairman



Shawna-Kay Harris D.O.B. 5/28/94, Gr. 7, 16 yrs old

Shawna-Kay has been at the school for 4 years. She likes all of the teachers and the school environment. One of her favorite things is playing football! Shawna-Kay lives with her grandmother who is not doing well physically.

She has a processing problem making it difficult for her to understand things. Lately she has had problems "blocking out." She saw a doctor, but they cannot find a cause and plan on doing further testing. Shawna-Kay would like to be a housekeeper someday.



SEARCHING *for the* KING

A Christmas musical drama for the entire family presented by
Bethany Choir, Orchestra and Drama Team

THREE FREE PERFORMANCES

FRIDAY
DECEMBER 2
7:00 PM

SATURDAY
DECEMBER 3
7:00 PM

SUNDAY
DECEMBER 4
2:00 PM

A time of fellowship will be held for 30 minutes before and after each musical performance.

Please plan to stop by the coffee room (MPR) for a snack, beverage and good fellowship.

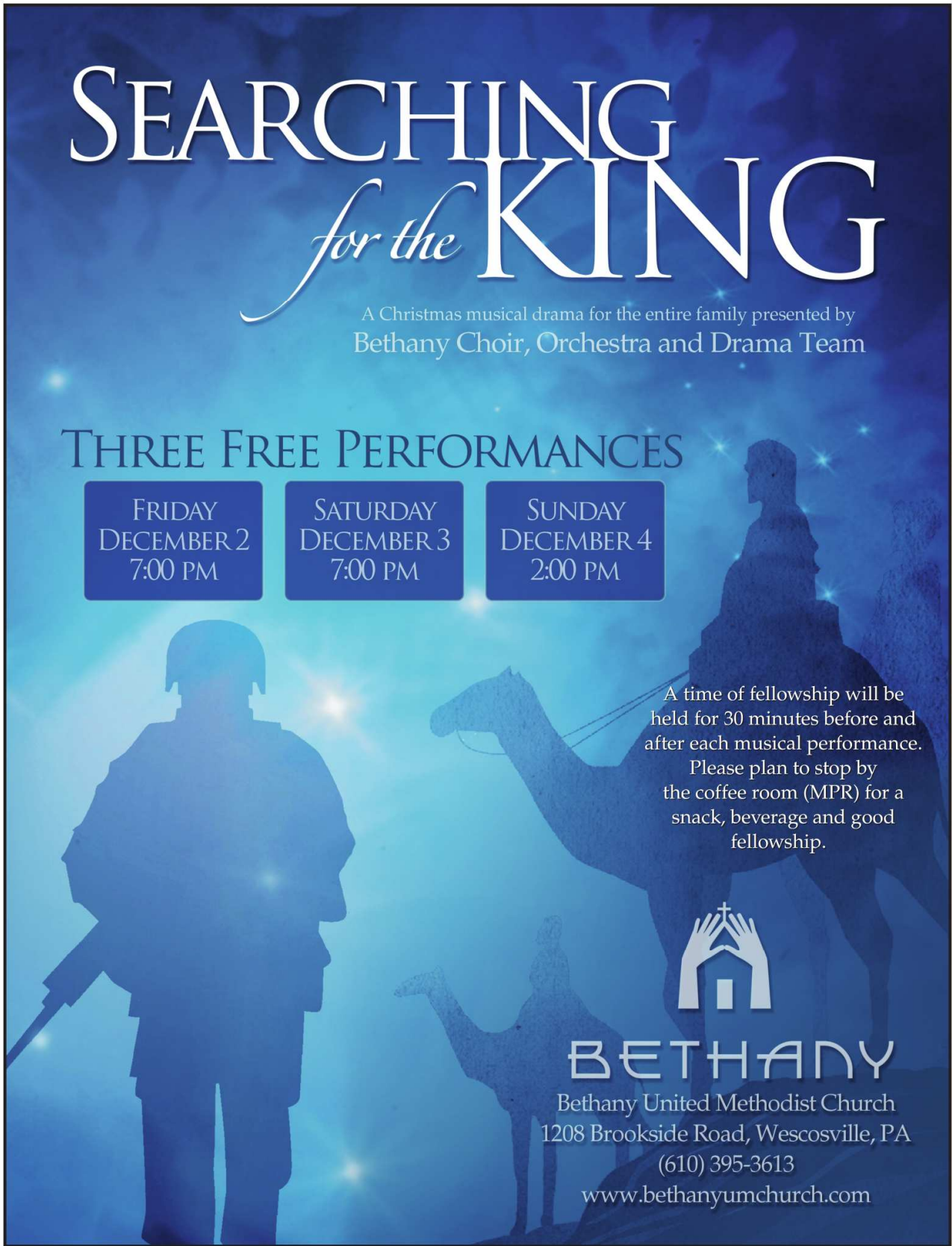


BETHANY

Bethany United Methodist Church
1208 Brookside Road, Wescosville, PA

(610) 395-3613

www.bethanyumchurch.com





Bethany Church at Catsauqua News

Winter brings with it's arrival lots of activity and holiday preparations. Worship, prayer, Bible study and fellowship can certainly enrich our spiritual life during this beautiful time of the year. Read on and find out what's happening at the Catsauqua Campus...and Join us!



We need servants (our name for volunteers) to help in hospitality ministries on Sundays. We need greeters, communion servers, nursery workers, children's Church workers, and the list goes on. Please refer to the sheet in your attendance booklet for areas to serve Christ and His Church at the Catsauqua Campus.

Leadership Directory: Catsauqua Campus

Who to contact with any questions in these areas:

- Church Office – (610) 395-3613
- Worship Leader – Ken Hoover (610) 395-3613
- Holy Communion – **Need a Volunteer**
- Hospitality – Bart Bierer (610) 266-1328
- Sunday School – Janelle Hendershot (484) 788-3118
- Greeters – Mike & Terry Iacocca (610) 264-3741
- Grounds – Mike Iacocca (610) 264-3741
- Publicity – Terry Iacocca (610) 264-3741
- Outreach – Jeff James (610) 266-1362
- Child Care – **Need Coordinator**
- Hospital – Rev. Kathryn Wieder (610) 395-3613

Our Sunday Schedule:

9:30 a.m. – Contemporary Worship with our praise band and Sunday School for children

All **Catsauqua Older Adults** are invited to our Senior Citizens' Fellowship Events. For further information call our Info Line at (610) 395-3613, extension 49, check this edition of the Post, or call the office and request that a monthly post card be sent to you.

ATTENTION all Redner's Shoppers

Remember to bring in your Redner's Grocery "Save A Tape" slips and deposit them in the proper receptacle in the area next to the MPR. Please DO NOT cut off the area of the tape that states "Today's Contributions." This portion of the tape is needed for us to get reimbursements. The Church receives a small percentage of sales from the company, which is put towards our Church mortgage. **REMEMBER TO GET A "Save A Tape" CARD AT THE SERVICE WINDOW IN REDNERS** to participate in the donation program. Then swipe the card when you check out. Over the years, several thousand dollars have gone to deplete our Church indebtedness. This amount could be much larger if more people participated in the program. Thanks.





Catasauqua Campus Calendar of Special Events:



Zumba takes place on Tuesday evenings at 6:00 p.m. Call Quay Brashear at the Church office to register or for more information.

Darcy and Bart Bierer invite you to join their **adult small group study** at the Parsonage on Thursday evenings at 7:00 p.m. Call them for further information.

Following Communion on the second Sunday of the month, join us immediately in the social hall for a light lunch and fellowship.

Join us for **Christmas Eve Worship**, at 7:30 p.m. December 24, 2011.

Do you get regular e mails from Bethany Church? We call it the Bmail ("B" for Bethany). It is up-to-date information about what's happening at Bethany Church.

Call the Church office at (610) 395-3613 and request to be put on the B mail list.

Community Outreach

As you enter the social hall, you will find a grocery cart for donations to the Catasauqua area Food Bank and a large container for clothing donations to the Catasauqua Thrift Shop. There is also a collection container on the coffee bar for cash donations, which are used to supply grocery cards for the needy. These are all ways that you can assist those in need within our community. Any questions talk with Jeff James. Thanks for sharing and caring!

Warrior Support Group

First Tuesdays of the month at 7:00 PM
Parsonage Fireside Room

This is a support group for individuals who are facing medical illnesses that have impacted their lives, such as (but not limited to) cancer, diabetes, cohns disease, chronic headaches, dialysis, heart disease, and lung disease. We invite any who are battling a medical illness in their lives to join us.



Lay Ministry

Christmas Worship Celebrations

As you are making your plans for Christmas Eve, please give consideration as to how you can serve at church as we celebrate the birth of Jesus Christ. In your bulletin you will find an insert on which you can indicate your gift of service for Bethany's Christmas celebrations. You can also find this sign-up sheet on the church website www.bethanyumchurch.com. There are so many opportunities to serve!! Christmas can be a busy time so plan now to allow time for serving and let this be your gift to Jesus Christ.

Giving Tree

In the Narthex/lobby area, you will find a tree with many different ornaments on it. Each ornament shape or color represents a different organization/family in need. If you would like to share with others this Christmas, please stop by the Giving Tree and choose an ornament. Details such as when and where to return your donation are included on the ornaments.

Thank you for your Faithful Service

Thank you to Mary Bristol and Bethany Moyer who have committed to being Bethany Church's representatives to CareNet. You will be hearing more about how you can assist in CareNet's mission.

Thank you to Dave Clark for accepting the leadership position of Church Council chairperson. Also, thank you to Rob Costantini for his service of leading Church Council for 3 years.

Thank you to Robert Huber, Gene Davis, and Karen Schrantz for serving on Trustees.

Thank you to David Hahn for serving as Lay Leader for Bethany for the past 3 years.

Thank you to John Long for accepting a position on the Nominations team.

Thank you to Bob Ingalls and Susan Farkas for serving on the Nominations team for the past 3 years.

Fellowship Time News

Saturday fellowship times in December will be Saturday, December 3 and Saturday, December 17. On Saturday December 17, please bring your favorite Christmas cookies to share.

On the first Sunday of each month, there will be an allergy-free snack in the coffee room (MPR). This snack can be found on the table with the water thermos. Please reserve this special snack for those with allergies. There will be a sign next to the snack explaining the ingredients.

In addition to the once a month allergy-free snack, we have one servant each week committed to bringing a "healthy" snack for fellowship time. If you would like to be a part of the "healthy snack" team, please contact Donna Barnwell for more info.

Fellowship time can use individual packets of hot chocolate during the winter months. If you would like to donate hot chocolate, simply bring it to the coffee room on Saturday evening or Sunday morning. Thank you.

Servant Search

Bulletins – it is not too late to sign up to help pass out bulletins in 2012. Please sign up on the brown sheet or contact Donna Barnwell in the church office.

A Lost and Found servant is needed to take inventory of Lost and Found at the welcome desk and the coat closet. Working from a list of dates on the Lost and Found inventory, the servant decides what items are donated to Twice Blessed.

Community Service Opportunity

Everlasting Life Ministries will have a Christmas Dinner on December 17 at Bethany EC Church, 224 N 6th Street in Allentown. This dinner will be for the less fortunate of Allentown. Everlasting Life is looking for baked goods, fresh fruit, canned goods, paper products, and monetary donations. In addition, you are welcome to volunteer to serve the dinner. Please call (610) 776-4009 if you would like to donate items needed or to offer your time to serve dinner.



Children's Ministry

We have some great activities coming up for children!



Wednesday, December 14

AWANA is having an International Christmas this year by learning about the different traditions around the world. We'll have activities and food representing Mexico, China, and many others. All are invited to this free family event from 6:00 - 8:00 p.m.



Saturday, December 17

Children's Christmas Party - we'll have some crafts, snack, and activities all celebrating the birth of Jesus, God's Son. Jesus is the reason for the season!!! All ages are welcome. This free family event is from 10:00 - 11:30 a.m.

Friday, January 20, 2012

Parent's Night Out - Go shopping, read a book, date your spouse. Drop your kids off for a fun evening of games and crafts. This event is 6:30 - 8:15 p.m. Cost is \$5.00/child or \$15.00 maximum per family. Snack will be served.

CHILDREN'S MINISTRY NEWS:

The **Good News Club** at Wescosville Elementary, sponsored by Bethany, just finished their Fall session. The group had an attendance of up to eighteen children who learned about how God worked in David's life and can work in ours. We had one child accept Christ as her Savior. What a blessing to see children excited about God! We look forward to our Spring session.

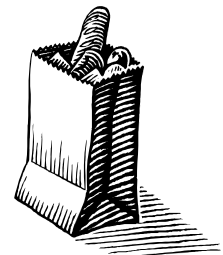
Support Group for Parents of Children with Special Needs: Be sure to tell others of our Bible based support group for parents of children with special needs. This group meets on the first and third Monday nights at 7:00 p.m. Parents share information, concerns, and a devotional is given. Childcare is provided. Contact Darcy Bierer for more information.

Emergency Food Pantry: "Thanks for Sharing!"

Each week of the month attendees to a different worship service are encouraged to bring in a donation for the food pantry. Look for reminders on BMail and the Worship Bulletin. More and more people are using this ministry to keep their families fed during hard times.

We especially need plastic jars of peanut butter and jelly, canned meats and stews, canned fruit, and canned potatoes.

Saturday 5:00 p.m. worship – 1st Saturday of each month
 Sunday 8:00 a.m. worship – 2nd Sunday of each month
 Sunday 9:15 a.m. worship – 3rd Sunday of each month
 Sunday 11:00 a.m. – 4th Sunday of each month



Thank you for your tremendous support! Thank you for caring.



Preschool News

Thanksgiving is a time for giving thanks. At preschool, we are learning about the joy of giving and being thankful. "Give thanks to God and Praise His Name." Psalm 100:4b. Each classroom donated items to make a food basket for a family who otherwise would not be able to have a feast for the holiday.

Christmas is the CELEBRATION OF JESUS' BIRTH! It is an exciting time for all of us at the Preschool. We have many activities planned. We will be learning all about the angel visiting Mary, Mary and Joseph traveling to Bethlehem, and the wonderful news of Jesus' birth.

Our teachers will help us put on a special program in the sanctuary for our families to enjoy. We have been working really hard on our music and bible versus. The Christmas Program schedule is as follows:

- ◆ 3's Mrs. Cox and Mrs. Zegalia 10:00 a.m. on Thursday, December 15, 2011
- ◆ 4's Mrs. Ruch and Mrs. Galiardo 10:00 a.m. on Monday, December 19, 2011
- ◆ 5's Mrs. Brown and Mrs. Bishop 10:00 a.m. on Tuesday, December 20, 2011
- ◆ 4's Mrs. Brashear AM and PM 10:00 a.m. on Wednesday, December 21, 2011



Preschool Registration for 2012/2013 is as follows:

- ◆ Monday, January 9, 2012 at 9:30 a.m. for currently enrolled students/families
- ◆ Tuesday, January 17, 2012 at 9:30 a.m. for Bethany church family
- ◆ Wednesday, January 18, 2012 at 9:30 a.m. for the community

DISCIPLE

BECOMING DISCIPLES
THROUGH BIBLE STUDY

Disciple 1 and Disciple 2 Bible Study Groups will begin in January, 2012. Meeting night will be Tuesdays, twice a month, for two hours. Contact Pastor Ralph at the Church office with any questions,

Disciple 1 (requires 30 to 45 minutes of study time 6 days a week.)

This study requires reading large portions of Scripture each week and is based on careful study and preparation. During the course of thirty-four weeks, groups will move through the biblical stories of Creation (Genesis) to the New Jerusalem (Revelation). The principal Scripture for each session follows the chronological movement of the biblical story.

Disciple 2 (requires 20 to 30 minutes of study time 6 days a week.)

This thirty-two-week study selects specific portions of Scripture and delves deeper into them. Depth study of Scripture will be the work both of individual members and of the group in its bi-weekly meeting. Equal attention is given to both the Old and New Testaments with participants reading the major and minor Old Testament prophets, with the exception of Daniel, and the thirteen letters traditionally attributed to Paul. Appropriate connections are made to other parts of Scripture both through reading and study assignments and through commentary in the study manual.

DISCIPLE
BECOMING DISCIPLES
THROUGH BIBLE STUDY



Volunteer Editor for POST

This position can be done from the comfort of your home and can be a shared position. The POST is printed every other month. The editor receives the articles from the office manager, and lays them out in a "publisher" format. The editor can use his/her creative gifts to add pictures, scriptures or more in empty spaces. He/she also helps to edit/proofread the individual articles. The next issue would be the February/March edition and would be sent to the editor the week of January 9 and would need to be sent back to the office by January 23. If interested please contact Donna Long at the church office or dlong@bethanyumchurch.com.



Deadlines For Bulletin and Post

Worship Bulletin deadline is each Tuesday afternoon at 5:00 p.m. You may send your announcements to bulletin@bethanyumchurch.com or put them in the bulletin folder outside the Church office. All announcements are limited to 25 words.

The Post deadline for February/March is Friday, January 6, at 5:00 p.m. You may send your articles to post@bethanyumchurch.com or put them in *The Post* folder outside the Church office. All *Post* articles are limited to 225 words each.

The February/March Post will be distributed following worship on the last Sunday of January. Contact Donna Long in the church office with any questions.



DEAR SUNDAY GREETERS, THANK YOU SO VERY MUCH!

Wow, I can't believe, I have been your Greeter Coordinator for a little over a year now! As you can tell, I thoroughly enjoy doing this! All of you do such a fantastic job and it sure has been my pleasure working with you. Not only are you wonderful greeters, but also dear friends! I have been called "Coach" and "The Scheduler", by some of you! You are such responsible and dependable greeters! You sure do know how to make everyone entering Bethany, feel so very special on Sunday mornings! THANKS! I am so looking forward to another superb year working with all of you!

GREAT JOB, SUNDAY GREETERS! I am truly so very proud of all of you!

Thank you again and God bless all of you, always,
Cheryl Carrington



BETHANY
WOMEN

Bethany Women

From the desk of the Women's Leadership Team:

Get Involved! Fellowship With Others! Grow In God!

For up-to-date information on Bible Studies and Events for Women, please contact Cheryl Carrington at roncheryl2010@live.com or call her at (610) 434-8356.

GET INVOLVED!

If you are looking for a way to get involved in the Women's Ministry at Bethany, our ministry leaders are looking to build their teams. **Partner with a leader.** We need help with Administration, Events, Hospitality, Mentoring, and Spiritual Growth. Please call Cheryl Carrington at (610) 434-8356 or email her at roncheryl2010@live.com for more information.

Needed Now:

Bible Study and Small Group Leaders - Please contact the Keri Crawford at (610) 395-3613 or kcrawford@bethanyumchurch.com for more information.

Winter Soup and Salad Dinner - Coordinator and Helpers are Needed

Monday, January 9 from 6:30 p.m. - 8:30 p.m. in Fellowship Hall. Please call Linda Stear at (610) 336-6674 or email her at lastear07@rcn.com with any questions you may have.

FELLOWSHIP WITH OTHERS!

6 DOZEN COOKIE EXCHANGE with a SPEAKER

Saturday, December 10 from 6:30 p.m. - 8:30 p.m. in Fellowship Hall
Please Contact Jenn Riedy at (610) 395-8065 or e-mail her at jennriedy@ptd.net for more information.



WINTER SOUP and SALAD DINNER

Monday, January 9th from 6:30 p.m. - 8:30 p.m. in Fellowship Hall
Please e-mail Lynda Stear at lastear07@rcn.com or call her at (610) 336-6674 with any questions you may have.

GROW IN GOD!

THE REASON FOR GOD by Timothy Keller

This is a larger ongoing group Bible Study hosted by Barb Hornberger. Please contact Barb at (610) 398-7528 with any questions you may have.

Where: Wescosville/Allentown

When: Saturday Mornings

Time: 7:30 a.m. - 9:30 a.m.



**BOOK CLUB**

Always Open for New Members! The Bethany Book Club reads Christian books and books that apply Christian principles. We use a suggested reading guide and also explore other themes of the book in a relaxed atmosphere. If you are interested in leading or participating in the Bethany Book Club, please contact Denise Morth at (610) 398-0862 for more information.

Where: In Members' Homes

When: First Tuesday of Every Month

Time: 6:45 p.m. - 8:45 p.m.

WOMEN OF FAITH STUDY GUIDE SERIES TITLED "GIVING GOD YOUR ALL"

Early Birds is an ongoing Small Group Bible Study for women of any age. All ladies are welcome! Please call Jane Miller or Judy Rotkowski at Bethany Church at (610) 395-3613 for more information.

Where: Parsonage - Front Room

When: Thursday Mornings

Time: 7:30 a.m. - 8:30 a.m.

PRAYING THE NAMES OF GOD by Ann Spangler

Those participating in this Bible Study will learn how to study and pray God's names by focusing each week on one of the primary names or titles of God. Praying the Names of God is a unique devotional, one that offers a rich program of daily prayer and study, designed to lead people into fresh encounters with the living God. This class is hosted by Kathy Kochanek and facilitated by Marleah Bridges. New ladies that want to grow deeper with God are welcome at anytime! Please call Marleah Bridges at (610) 391-8935 or e-mail her at bridges@ptd.net for more information.

WOMEN'S WEIGHT LOSS SUPPORT GROUP

Are you interested in a support group? Are you struggling to maintain your weight? Come pray and participate in weight loss related bible studies with other ladies and learn tips on how to lose weight and keep it off with God's help! New ladies are welcome! Please call Mary Powell at (610) 442-0828 or e-mail her at marypowell23@yahoo.com if you plan to attend, as we also do field trips. You may also contact Mary for more information or with any questions you may have.

Where: Fellowship Hall - Youth Room

When: Saturday December 3, 17, and 31, January 14 and 28, and February 11 and 25

Time: 10:30 a.m. - Noon

S.W.E.E.T. - Single Women Encouraging and Evangelizing Today The Ten Commandments

All single women interested in joining the SWEET Bible Study can contact Linda Schissler at (484) 538-6034 or schisslerlinda@yahoo.com. New members are accepted at anytime. Be prepared for sharing, learning, snacking and having A LOT of FUN!!

Where: Parsonage - Front Room

When: Second and fourth Wednesdays

Time: 7:00 p.m. - 8:30 p.m.

THE BOOK OF MATTHEW

Are you interested in learning more about the Bible? Beginning in February, we will be studying The Book of Matthew. If you want to understand God's Word more and dig a little deeper and learn how it applies to your everyday life, please join us. Look for more information and sign-ups in January. Please Contact Donna Cornelius at (610) 814-6950 with any questions you may have.

The Women's Mentoring Ministry has been preparing for this new season of sharing and caring.

Women of all ages, you are invited to be blessed with a Godly woman who will mentor you in your faith walk for a season of about six months.

On Tuesday, January 17, 2012, at 6:30 p.m. at the Church, we will be holding an **informational meeting for Women's Mentoring**. Join us for light refreshments, fellowship with other women, and the opportunity to find out how women's mentoring can benefit you!

Starting in February and through July of 2012, each woman will share her faith walk with another woman. They'll meet twice a month in person, in addition to other communication through their journey together. This will be a made-to-order time commitment to accommodate both women's schedules.

We invite you to grow in your faith or share a concern with the caring mentor the Lord has prepared for you

Here are a few of the multitude of issues that could spur you to request a mentor in this upcoming season of your faith walk:

"There's no time!"

"My life is overwhelming!"

"I am at a peaceful time in my life. What does the Lord have in mind for me?"

"My priorities need help."

"I just want to talk to someone I can trust!"

"Is God listening?"

"Why do I feel this way?"

"God is awesome! How can I thank Him?"

Join us for fun, faith, and fellowship.

Look for the sign-up sheets in the pews or contact Bobbi Janson at (610) 432-4988 or jjj517@rcn.com for more information.

LOST AND FOUND

Lost items may be claimed at the Welcome Desk. For lost clothing, check toward the back of the coat closet opposite the desk.

These items were at the Welcome Desk on November 2, 2011:

Cap, baseball style, "P'land Area Soccer"

Doll, "Silly"

Earring, gold hoop, single

Hoodie, 2T, blue

Hoodie, distressed denim, L

Hoodie, plaid, L

Jacket, red and navy, 10/12Y

Jacket, black, "Allentown Municipal"

Mug, Bethany coffee mug

Pandora (replica) bracelet – call church office to claim

Purse, gray, bow

Ring, silver

Spoon, blue plastic, small

Sweater, pink, M

This is the last call for the following items. Unclaimed items will be disposed of two weeks after distribution of this issue of the Post.

Brush – purple

Coat – black nylon, L

Eyeglass pouch – black

"G" pendant

Jacket – white and navy, "San Francisco"

Strawberry Shortcake figurine

Sunglasses – dark brown frame



Contact Information:

Keri Crawford, Director of Small Groups

kcrawford@bethanyumchurch.com

(610) 395-3613 ext. 33

(610) 905-1340 (cell)



"And let us consider how we may spur one another on toward love and good deeds. Let us not give up meeting together...but let us encourage one another, and all the more as you see the Day approaching"

~ Hebrews 10: 24-25

Small Groups provide an opportunity to deepen your love and commitment to God through life transformation! Here at Bethany, we are creating more opportunities for you to connect with others through many different small groups and studies for adults. These are studies in which you are taught to grow in your spiritual journey as well as participate in Christian fellowship with one another outside of Worship. Currently, there are six different types of small groups: Sunday Morning Offerings, Fellowship Groups, Weekday Co-Ed Studies, Weekday Men's Studies, Weekday Women's Studies and Small Groups.

The **Sunday Morning Offerings** provide a weekly opportunity to be combined with a Worship Service to deepen your commitment to God. The Fall/Winter 2011 schedule is as follows:

9:15 a.m.

Study	Location	Leader(s)
Miracles	Parsonage Front	Ken Young
Laugh Your Way to a Better Marriage	Parsonage Basement	Charlie Gardner
Courageous Living Bible Study	Parsonage Fireside	Quay Brashear
Parables of the Old and New Testament	Choir Room	Mike Bunner
The Secrets of the Vine	Room 203	Wayne Benjamin
Courageous Living Bible Study	Rooms 202 & 204	Bud Reed & Matt Mumma

11:00 a.m.

Study	Location	Leader
Grief share	Parsonage Front	Kathryn Wieder
Bethany Basics – 2 nd Sunday of the month	Choir Room	Donna Barnwell

Fellowship Group members meet to enrich their lives with the fellowship of others. Some groups may have a Bible Study while others will gather for social activities. These groups typically meet once per month.

Group	Time	Location	Coordinator
Adults in their early 20's & early 30's	1 st Friday at 7:00 p.m., starting in January	Parsonage	TBD
Adults in their early 30's to mid 40's	2 nd Friday at 7:00 p.m., starting in January	Parsonage	Keri Crawford
Adults in their mid 40's and older	3 rd Friday at 7:00 p.m., starting in January	Parsonage	TBD
Adults of all ages	4 th Friday at 7:00 p.m., starting in January	Parsonage	TBD



The **Weekday Co-Ed, Men's and Women's Studies** provide opportunities to deepen your love and commitment to God. The Fall/Winter schedule is as follows:

Co-Ed Studies

Study	Location	Time	Leader(s)
The Purpose of Christmas	TBD	Monday at 6:00 p.m., starting on 12/5	Keri Crawford
Disciple I Bible Study	Parsonage Front	1 st & 3 rd Tues. at 6:00 p.m., starting end of January	Pastor Ralph and Jeff Markle
Disciple II Bible Study	Parsonage Front	2 nd & 4 th Tues. at 6:00 p.m., starting end of January	Pastor Ralph
The Basics	TBD	Tuesday at 7:00 p.m., starting in mid-January	Greg Reills
Prayer for our Schools	Chapel	Wednesday at 9:00 a.m.	Bethany's Ministry Team
Parents of Teens Support Group	TBD	1 st Friday at 7:00 p.m.	Tanya Sheffer

Men's Studies

Study	Location	Time	Leader(s)
Mountain Movers	Conference Room	Wednesday at 6:30 a.m.	Ron Krikorian and Jeff Paiste
Book of Acts	Rooms 202 & 204	Wednesday at 6:30 p.m.	Paul Abbott
Promise Keepers	Parsonage Basement	Friday at 6:00 a.m.	Greg Light
Promise Keepers	Route 309 Trivet	Saturday at 7:00 a.m.	Pete Brown

Women's Studies

Study	Location	Time	Leaders (s)
Praying the Names of God	Off-site	Tuesday at 9:15 a.m.	Marleah Bridges
Book Club	Off-site	1 st Tuesday at 6:45 p.m.	Denise Morth
S.W.E.E.T.	Parsonage Front	2 nd & 4 th Wed. at 7:00 p.m.	Linda Schlisser
Early Birds	Parsonage Front	Thursday at 7:30 a.m.	Jane Miller and Judy Rotkowski
Sisters in Christ	Off-site	Thursday at 7:00 p.m.	Mary Thomas
Women of the World	Off-site	Saturday at 7:30 a.m.	Barb Homberger
Women's Weight Loss Support Group	Youth Room	Saturday at 10:30 a.m. (12/3, 12/17, 12/31)	Mary Powell



A **Small Group** is small in number, usually no more than twelve to fourteen people per group. Recognizing that relationships thrive in an environment of intimate connection, common experience, and genuine sharing, our small groups provide a way for people to connect to the larger community of Bethany Church. They serve as a place for friendship, support, expression of spiritual gifts, leadership development, and so much more. Because none of us is sufficient on our own, we desire everyone to live in community. Supported by mutual prayer, the study of Scripture and the wisdom and compassion of those making similar journeys, our daily challenges come into perspective. Bethany Church has over 25 groups that meet in homes in our community or at church.

If you have any questions about these studies and or Small Groups or are interested in participating, please contact Keri Crawford at the church office and also visit the Small Group section of Bethany's website.

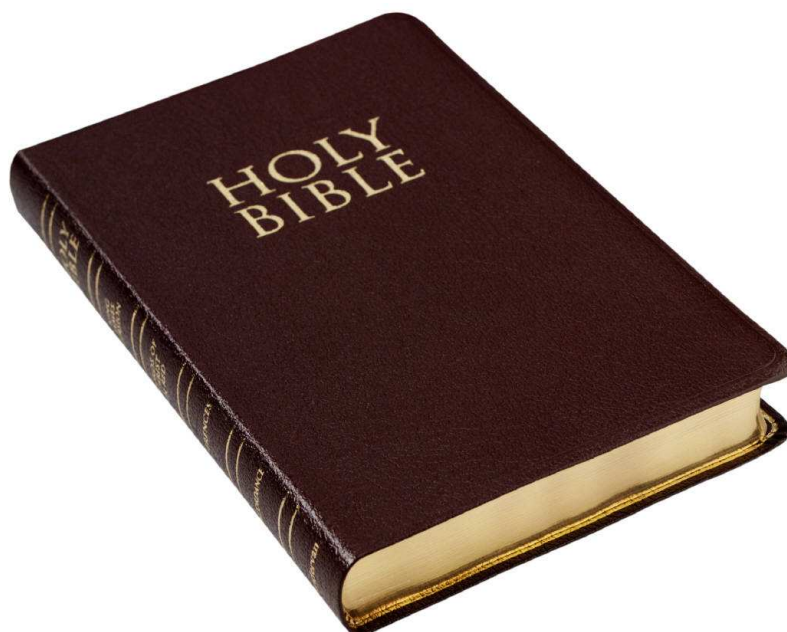


What is Financial Peace University? FPU is a 13-week life-changing program that empowers and teaches you how to make the right money decisions to achieve your financial goals and God's plan for your life. Imagine what the people of God could do for the Kingdom of God if they were debt free.

Bethany will be offering FPU on Sundays from 6:00 p.m. to 8:00 p.m. from January 8, 2012 to April 1, 2012. Sign up on the pew sheets and register for materials online at Bethany's website.

Advent Studies are scheduled to begin the first week of December. For more information, please see the bulletin or visit the Small Group section of the website.

As we head into the Winter season, please continue to pray for God's direction and wisdom as we all seek to do His will.





Senior Citizen's Fellowship

Senior's Citizens' Events: December, 2011 through January, 2012

55 or older? Join us every Tuesday (Note: some meetings are on a Thursday).
Call (610) 395-0030 ext. 49 to find out what's happening each week.

Bible Studies are scheduled at 9:30 a.m. Tuesday mornings in the Studio Room (off of Fellowship Hall). The meeting dates are:

- ◆ December 5 – John 13
- ◆ December 13 – John 14
- ◆ January 3 – John 15
- ◆ January 17 – John 16

Fellowship Events are scheduled for:

Join us on Thursday, December 1, 2011 as we begin the celebration of Christmas!

Christmas at the Pines

A Holiday Musical Review at the Pines Dinner Theater

New for 2011, we will celebrate the most wonderful time of the year with this heart-warming show. Featuring some of your favorite holiday classics, the Nativity, and even Santa Claus, *Christmas at the Pines* is the most fun you'll have this holiday season.

Reservations are limited so call Pastor Ralph right away!

- ◆ **No meetings** are scheduled for Tuesdays: December 20 and 27 because of the Christmas Holidays.
- ◆ January 10 – Covered Dish Dinner at Noon in the Church.
- ◆ January 24 – Lunch out, place to be determined.

Call Pastor Ralph 610-395-3613 ext. 14 with any questions about Senior Citizen's Fellowship.

Don't forget to dial the Senior Fellowship's information line at: (610) 395-3613 ext 49.
This contains up to the minute information about events.



Happy Birthday!



Happy Birthday!

Richard McClain (12/3) 6440 Tamarack Drive, Allentown, PA 18104

Ethel Senger (12/4) 141 Ramapo Trail, Allentown, PA 18104

Sammie Trumbore (12/9) 819 Chestnut Street, Emmaus, PA 18049

Reba Conover (12/10) 315 N. 41st Street, Allentown, PA 18104

Peggy Stewart (12/19) 1400 Par Causeway, Allentown, PA 18106

Rob Harris (12/21) 3107 Elizabeth Lane, Macungie, PA 18062

Mary Hayman (12/24) 101 S. 1st Street, Apt 601, Lehighton, PA 18235

Virginia Shepard (12/25) 707 Maiden Choice Lane, Apt 9T04, Catonsville, MD 21228

Bill Fackler (12/30) 4997 Cypress Street, Allentown, PA 18106

* * * * *

Maynard Brensinger (1/2) 6032 Fairway Lane, Wescosville, PA 18106

Richard Moyer (1/4) 1312 S. 9th Street, Allentown, PA 18103

Rommy Ashmar (1/7) 1600 Lehigh Parkway E., Apt 3E, Allentown, PA 18103

Barbara Sterner (1/7) 5010 Cypress Street, Allentown, PA 18106

John Mondschein (1/10) 830 Round Top Circle, Allentown, PA 18104

Edith Brensinger (1/12) 6032 Fairway Lane, Wescosville, PA 18106

Wayne Benjamin (1/14) 4931 Cypress Street, Wescosville, PA 18106

Jim Warmkessel (1/17) 4501 Stole Road, Emmaus, PA 18049

Ronald Krikorian (1/20) 4305 E. Wyndenmere Circle, Schnecksville, PA 18078

Nancy Case (1/25) 703 Brookfield Circle, Macungie, PA 18062

Linda Cummings (1/25) 2191 Mountain View Road, Apt 410, Stafford, VA 22556





Thank You

Dearest Friends at Bethany,

Thank you for the many expressions of kindness during Charlotte's lengthy hospital stay and funeral services. The flowers you provided would have brought a tear to her eye. She loved Bethany and all those she met along the way on a Sunday morning. We will miss her. Special thanks to all the Pastors.

You have all been very kind and I am blessed to call you my church family!

With much love,
Donald Neff and family

Dear Bethany Church Staff,

Thank you so much for not only the card in regards to the passing of my father, but also all the kind words, thoughts, and prayers during this difficult time. Our whole family appreciated the fact that so many in the Bethany Church staff and family were lifting us up in prayer. It makes such a huge difference!!

Thanks from all of us,
Tim & Cathleen Woodbridge

To all my friends of the Bethany Senior Fellowship,

Thank you so much for the beautiful fruit basket. I am really enjoying it. I am feeling better every day and hope to get out and about soon and see you all.

Kindest regards,
Grace Harmon

Dear Bethany Food Angels,

We want to let you know how much we appreciated the wonderful meals you delivered when Myra came home from the hospital. It was a challenging time just to manage her care and each day that a smiling face arrived at the door with a home-cooked meal, we thanked each of you and that God blessed us to have your help. God Bless each of you!

Love,
Myra, Chip Woroniak and their daughter, Carol.

**“I tell you the truth, whatever you did for one of the least of these brothers of mine,
you did for me.”
Matthew 25:40**